



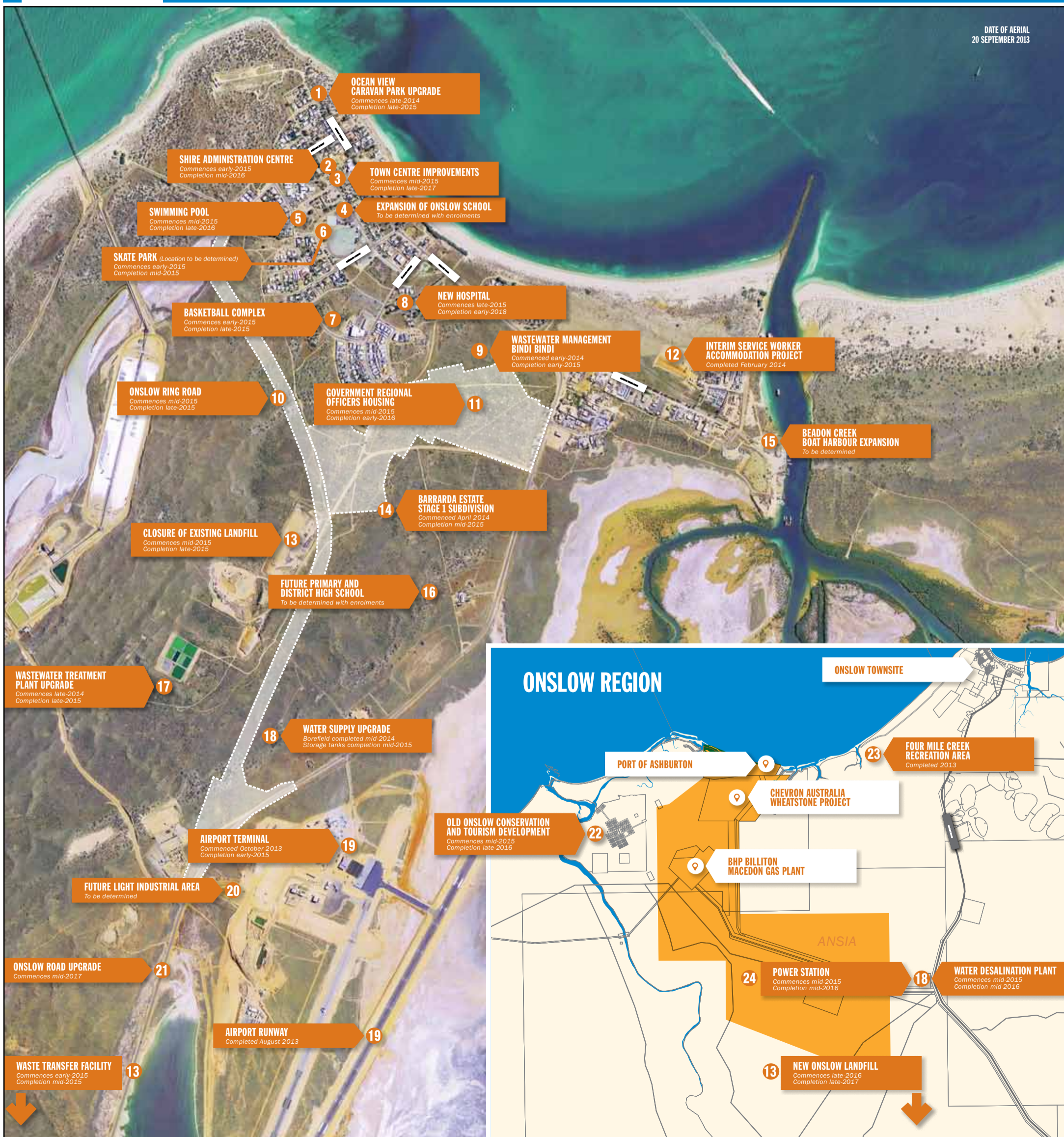
# MAJOR DEVELOPMENTS FOR ONSLOW

The State Government, Shire of Ashburton, Chevron Australia and BHP Billiton are working together to deliver new infrastructure and community facilities in Onslow.

Major works include:

- New hospital
- Public swimming pool
- Power and water upgrades
- New airport terminal and runway
- Road upgrades
- Leisure facilities
- School upgrade

For more information visit [www.dsd.wa.gov.au](http://www.dsd.wa.gov.au)  
Refer overleaf for further details on each project.



## 1 OCEAN VIEW CARAVAN PARK UPGRADE

<b>AGENCY/DEPARTMENT NAME</b>
Shire of Ashburton
<b>KEY FACTS</b>
<ul style="list-style-type: none"><li>● The Shire is undertaking the refurbishment and upgrade of the Ocean View Caravan Park.</li><li>● Aged power, water and drainage services will be replaced.</li><li>● Improved amenities such as ablutions and kitchen facilities will enhance the experience for tourists and residents.</li></ul>
<b>ANTICIPATED TIMING</b>
<ul style="list-style-type: none"><li>● Commence: late 2014</li><li>● Complete: late 2015</li></ul>

## 2 SHIRE ADMINISTRATION CENTRE

<b>AGENCY/DEPARTMENT NAME</b>
Shire of Ashburton
<b>KEY FACTS</b>
<ul style="list-style-type: none"><li>● Chevron will contribute funding towards a new Shire building that will include a Town Hall, Council Chambers, Visitors Centre and Public Library.</li><li>● The Shire has advertised a tender for the final design and construction.</li></ul>
<b>ANTICIPATED TIMING</b>
<ul style="list-style-type: none"><li>● Commence: early 2015</li><li>● Complete: mid 2016</li></ul>

## 3 TOWN CENTRE IMPROVEMENTS

<b>AGENCY/DEPARTMENT NAME</b>
Shire of Ashburton
<b>KEY FACTS</b>
<ul style="list-style-type: none"><li>● Chevron will contribute funding to the Shire towards upgrading the Onslow town centre.</li><li>● What form these improvements might take will be for the Shire to determine in consultation with the Onslow community.</li></ul>
<b>ANTICIPATED TIMING</b>
<ul style="list-style-type: none"><li>● Commence: mid 2015</li><li>● Complete: late 2017</li></ul>

## 4 EXPANSION OF ONSLOW SCHOOL

<b>AGENCY/DEPARTMENT NAME</b>
Department of Education
<b>KEY FACTS</b>
<ul style="list-style-type: none"><li>● Chevron will contribute funding to the Department of Education to expand the existing school.</li><li>● Up to three transportable classrooms will be delivered in stages, as required.</li></ul>
<b>ANTICIPATED TIMING</b>
<ul style="list-style-type: none"><li>● To be determined, in line with student enrolments.</li></ul>

## 5 SWIMMING POOL

<b>AGENCY/DEPARTMENT NAME</b>
Shire of Ashburton
<b>KEY FACTS</b>
<ul style="list-style-type: none"><li>● Chevron will contribute funding to the Shire for a new pool.</li><li>● Design options for the facility are currently being considered by the Shire.</li></ul>
<b>ANTICIPATED TIMING</b>
<ul style="list-style-type: none"><li>● Commence: mid 2015</li><li>● Complete: end 2016</li></ul>

## 6 SKATE PARK

<b>AGENCY/DEPARTMENT NAME</b>
Shire of Ashburton
<b>KEY FACTS</b>
<ul style="list-style-type: none"><li>● BHP Billiton is funding the construction a new Skate Park.</li><li>● The facility will be designed in collaboration with the Onslow community.</li></ul>
<b>ANTICIPATED TIMING</b>
<ul style="list-style-type: none"><li>● Commence: early 2015</li><li>● Complete: mid 2015</li></ul>
<b>FURTHER INFORMATION</b>
www.ashburton.wa.gov.au

## 7 BASKETBALL COMPLEX

<b>AGENCY/DEPARTMENT NAME</b>
Shire of Ashburton
<b>KEY FACTS</b>
<ul style="list-style-type: none"><li>● BHP Billiton is funding the construction of new outdoor basketball courts, near the Multi-Purpose Centre building.</li></ul>
<b>ANTICIPATED TIMING</b>
<ul style="list-style-type: none"><li>● Commence: early 2015</li><li>● Complete: late 2015.</li></ul>
<b>FURTHER INFORMATION</b>
www.ashburton.wa.gov.au

## 8 NEW HOSPITAL

<b>AGENCY/DEPARTMENT NAME</b>
WA Country Health Service
<b>KEY FACTS</b>
<ul style="list-style-type: none"><li>● The State Government and Chevron will contribute \$42 million for a new hospital.</li><li>● WACHS will continue to deliver health services from the existing hospital until the new facility is operational.</li></ul>
<b>ANTICIPATED TIMING</b>
<ul style="list-style-type: none"><li>● Commence: late 2015</li><li>● Complete: early 2018</li></ul>

## 9 WASTEWATER MANAGEMENT BINDI BINDI

<b>AGENCY/DEPARTMENT NAME</b>
LandCorp Department of Housing
<b>KEY FACTS</b>
<ul style="list-style-type: none"><li>● Closure of existing treatment ponds and connection of the Bindi Bindi sewerage system to town services.</li></ul>
<b>ANTICIPATED TIMING</b>
<ul style="list-style-type: none"><li>● Commenced: April 2014</li><li>● Complete: early 2015</li></ul>

## 10 ONSLOW RING ROAD

<b>AGENCY/DEPARTMENT NAME</b>
Main Roads WA
<b>KEY FACTS</b>
<ul style="list-style-type: none"><li>● A new ring road will provide an alternative route into town from Onslow Road and include a link to Barrarda Estate.</li><li>● It will also create an all-weather access road between town and Onslow airport.</li><li>● Once complete, the ring road is intended to become the main entry into Onslow.</li></ul>
<b>ANTICIPATED TIMING</b>
<ul style="list-style-type: none"><li>● Commence: mid 2015</li><li>● Complete: late 2015</li></ul>

## 11 GROH HOUSING

<b>AGENCY/DEPARTMENT NAME</b>
Department of Housing
<b>KEY FACTS</b>
<ul style="list-style-type: none"><li>● The State Government is providing land for government employee housing in Barrarda Estate.</li><li>● Chevron will contribute funding to the Department of Housing to construct 10 houses.</li></ul>
<b>ANTICIPATED TIMING</b>
<ul style="list-style-type: none"><li>● Commence: mid 2015</li><li>● Complete: early 2016</li></ul>

## 12 INTERIM SERVICE WORKER ACCOMMODATION PROJECT

<b>AGENCY/DEPARTMENT NAME</b>
Department of Housing
<b>KEY FACTS</b>
<ul style="list-style-type: none"><li>● Affordable accommodation consisting of 12 two-bedroom chalets for service workers in Onslow.</li></ul>
<b>ANTICIPATED TIMING</b>
<ul style="list-style-type: none"><li>● Completed February 2014</li></ul>

## 13 WASTE MANAGEMENT

<b>AGENCY/DEPARTMENT NAME</b>
Shire of Ashburton
<b>KEY FACTS</b>
<ul style="list-style-type: none"><li>● The Onslow Landfill Facility, operated by the Shire, is nearing capacity and will be closed and rehabilitated.</li><li>● A transfer facility is being developed to manage waste once the existing facility is closed.</li><li>● The Shire has identified a preferred site for a new landfill and is progressing relevant planning and approvals.</li></ul>
<b>ANTICIPATED TIMING</b>
<b>Transfer Facility</b>
<ul style="list-style-type: none"><li>● Commence: early 2015</li><li>● Complete: mid 2015</li></ul>
<b>Closure of existing landfill</b>
<ul style="list-style-type: none"><li>● Commence: mid 2015</li><li>● Complete: late 2015</li></ul>
<b>New Onslow Landfill</b>
<ul style="list-style-type: none"><li>● Commence: late 2016</li><li>● Complete: late 2017</li></ul>

## 14 BARRARDA ESTATE STAGE 1 SUBDIVISION

<b>AGENCY/DEPARTMENT NAME</b>
LandCorp
<b>KEY FACTS</b>
<ul style="list-style-type: none"><li>● LandCorp is developing a new residential subdivision. Stage 1 will include development of 220 lots.</li><li>● Chevron are to acquire 50 of these lots to house operations staff.</li><li>● Further subdivision will be staged to cater for anticipated population growth.</li></ul>
<b>ANTICIPATED TIMING</b>
<ul style="list-style-type: none"><li>● Commence: April 2014</li><li>● Complete: mid 2015</li></ul>
<b>FURTHER INFORMATION</b>
www.landcorp.com.au

## 15 BEADON CREEK EXPANSION

<b>AGENCY/DEPARTMENT NAME</b>
Dept. of Transport
<b>KEY FACTS</b>
<ul style="list-style-type: none"><li>● The Department of Transport has been planning the development and upgrade of the Beadon Creek Boat Harbour.</li><li>● A Land Use Framework for the area has been developed by DoT in conjunction with the Shire.</li><li>● Within the Land Use Framework an area has been identified for the development of a Community Boating Precinct.</li></ul>
<b>ANTICIPATED TIMING</b>
<ul style="list-style-type: none"><li>● To be determined.</li></ul>
<b>FURTHER INFORMATION</b>
www.transport.wa.gov.au

## 16 FUTURE PRIMARY AND DISTRICT HIGH SCHOOL

<b>AGENCY/DEPARTMENT NAME</b>
Department of Education
<b>KEY FACTS</b>
<ul style="list-style-type: none"><li>● It is anticipated a new primary and high school will be needed to cater for long term population growth in Onslow.</li><li>● A site for the proposed new school has been determined.</li></ul>
<b>ANTICIPATED TIMING</b>
<ul style="list-style-type: none"><li>● To be determined, in line with student enrolments.</li></ul>

## 17 WASTEWATER TREATMENT PLANT UPGRADE

<b>AGENCY/DEPARTMENT NAME</b>
Water Corporation
<b>KEY FACTS</b>
<ul style="list-style-type: none"><li>● Chevron has contributed funds to Water Corporation to upgrade the existing wastewater treatment plant to meet the growing needs of the town.</li></ul>
<b>ANTICIPATED TIMING</b>
<ul style="list-style-type: none"><li>● Commence: late 2014</li><li>● Complete: late 2015</li></ul>
<b>FURTHER INFORMATION</b>
www.watercorporation.com.au

## 18 WATER SUPPLY UPGRADE

<b>NEW DESALINATION PLANT</b>
<b>AGENCY/DEPARTMENT NAME</b>
Water Corporation/Chevron Australia
<b>KEY FACTS</b>
<ul style="list-style-type: none"><li>● Chevron and Water Corporation have commenced the design of a desalination plant which will supply an additional two million litres of water per day to Onslow.</li><li>● Once Chevron has completed construction, the desalination plant and associated infrastructure will be handed to the Water Corporation to own and operate.</li></ul>
<b>ANTICIPATED TIMING</b>
<ul style="list-style-type: none"><li>● Commence: mid 2015</li><li>● Complete: mid 2016</li></ul>

<b>CANE RIVER BOREFIELD UPGRADE AND NEW STORAGE TANKS</b>
<b>AGENCY/DEPARTMENT NAME</b>
Water Corporation
<b>KEY FACTS</b>
<ul style="list-style-type: none"><li>● The project will deliver an additional 250 million litres of water to Onslow residents each year.</li><li>● Water Corporation has completed the first stage of the Onslow water upgrade to expand the Cane River borefield allowing additional water to be delivered to Onslow.</li><li>● Two new 5 mega litre ground level water storage tanks (one of which has been funded by Chevron ) plus 1.5km of water main and a booster pump station.</li></ul>
<b>ANTICIPATED TIMING</b>
<ul style="list-style-type: none"><li>● Commenced: mid 2014</li><li>● Complete: mid 2015</li></ul>
<b>FURTHER INFORMATION</b>
www.watercorporation.com.au

## 19 ONSLOW AIRPORT

<b>AGENCY/DEPARTMENT NAME</b>
Shire of Ashburton
<b>KEY FACTS</b>
<ul style="list-style-type: none"><li>● The State Government, Chevron and the Shire have contributed funding towards the construction of a new runway, terminal building and associated infrastructure.</li></ul>
<b>ANTICIPATED TIMING</b>
<b>Timeline:</b>
<ul style="list-style-type: none"><li>● The new runway became operational in August 2013.</li></ul>
<b>Terminal</b>
<ul style="list-style-type: none"><li>● Commence: October 2013</li><li>● Complete: early 2015.</li></ul>
<b>FURTHER INFORMATION</b>
www.ashburton.wa.gov.au

## 20 FUTURE LIGHT INDUSTRIAL AREA

<b>AGENCY/DEPARTMENT NAME</b>
Shire of Ashburton
<b>KEY FACTS</b>
<ul style="list-style-type: none"><li>● The Shire is currently seeking a developer to create light industrial lots adjacent to the Onslow Airport.</li><li>● Subdivision approval has been obtained.</li><li>● The subdivision will be staged to meet demand for light industrial and service industries to cater for the expected population growth.</li></ul>
<b>ANTICIPATED TIMING</b>
<ul style="list-style-type: none"><li>● To be determined.</li></ul>

## 21 ONSLOW ROAD

<b>AGENCY/DEPARTMENT NAME</b>
Main Roads WA
<b>KEY FACTS</b>
<ul style="list-style-type: none"><li>● Chevron has contributed funding to Main Roads WA towards phased upgrades of Onslow Road.</li><li>● The initial upgrade was completed in 2012 and included installing passing lanes and widening intersections.</li><li>● Monitoring will determine when the final upgrades are required.</li></ul>
<b>ANTICIPATED TIMING</b>
<ul style="list-style-type: none"><li>● Commence: mid 2017</li></ul>

## 22 OLD ONSLOW CONSERVATION

<b>AGENCY/DEPARTMENT NAME</b>
Shire of Ashburton Pilbara Regional Council
<b>KEY FACTS</b>
<ul style="list-style-type: none"><li>● Chevron will contribute \$1 million for conservation works and heritage tourism at Old Onslow.</li><li>● Pilbara Regional Council will manage this project on behalf of the Shire and are developing plans to ensure the town's history is not lost.</li></ul>
<b>ANTICIPATED TIMING</b>
<ul style="list-style-type: none"><li>● Commence: mid 2015</li><li>● Complete: late 2016</li></ul>

## 23 FOUR MILE CREEK RECREATION AREA

<b>AGENCY/DEPARTMENT NAME</b>
Shire of Ashburton
<b>KEY FACTS</b>
<ul style="list-style-type: none"><li>● Chevron and the State Government contributed funding to upgrade facilities at Four Mile Creek.</li><li>● The area has been upgraded with landscaping, shelter structures, toilet facilities, lighting, seating, BBQ facilities, a boardwalk and parking for vehicles and boats.</li></ul>
<b>ANTICIPATED TIMING</b>
<ul style="list-style-type: none"><li>● Completed 2013</li></ul>

## 24 POWER STATION

<b>AGENCY/DEPARTMENT NAME</b>
Horizon Power/ Chevron Australia
<b>KEY FACTS</b>
<ul style="list-style-type: none"><li>● Chevron is working with Horizon Power to deliver a new power station and associated infrastructure, to be owned and operated by Horizon Power.</li><li>● It will deliver 9 Megawatts of power and be expandable to meet future growth requirements.</li><li>● Horizon Power has implemented short-term power supply measures to ensure demand for power can be met until the new plant is constructed.</li></ul>
<b>ANTICIPATED TIMING</b>
<ul style="list-style-type: none"><li>● Commence: mid 2015</li><li>● Complete: mid 2016</li></ul>
<b>FURTHER INFORMATION</b>
www.horizonpower.com.au